

PLOTMATE ADDS A NEW DIMENSION TO DOMESDAY CAPABILITY

The Domesday Project is a collection of over 9,000 sets of data on the UK and its people. Such information is, of course, ideal as an educational resource. Because Domesday is a totally screen-based system, however, it is difficult for more than one person to view the information at any one time.

Linear Graphics Limited, Essex based manufacturers of the Plotmate range of graphics plotters, now offer two unique ways to rectify the situation.

1. Plotting out pie, bar and line charts

PLOTMATE BBC WELCOME DISK

Software on Linear Graphics' PLOTMATE BBC WELCOME DISK enables Domesday users to re-process data from the National Disk into pie, bar and line chart format as required. The user has complete control over shading patterns, logging pen colour changes and the size and position of labels. Output can be A5, A4, or A3 in size, onto paper, card or OHT film, in up to 10 colours.

The Domesday 'National Disk' offers a vast amount of information - covering the major topics of: society, economy, culture and the environment. Plotouts thus might figure a bar chart showing the cost of oil spills incurred by authorities with coastlines, a line chart of Mercury levels in fish taken from the Thames over a ten year period, or perhaps a pie chart of land holdings for military use held by Army, Navy, RAF and Research Establishments.

The WELCOME DISK can be supplied in 40 or 80 track DFS format, or 80 track ADFS format, for use with all Plotmate models. It is purchased as part of the Plotmate BBC Welcome Pack, costing £23.14, which also includes a lead and manual. (Educational discounts are available.)

2. Plotting out data distribution maps from grid mappable data

****NEW** CONTOUR **NEW****

CONTOUR is an exciting new development from Linear Graphics that allows the Plotmate A4SM/A3M user to output complex, colourful maps utilizing the grid mappable data available from the Domesday 'National Disk', thus creating a permanent record of researched data. A highly sophisticated plotting package, CONTOUR utilizes grid mappable WRITEfile data, that could previously only be viewed on screen at a much lower resolution than a Plotmate plotout, or documented as text on a printer.

Maps generated by CONTOUR can be as complex as the user demands. The user specifies area of interest by region or grid reference. He may then plot out the coastline associated with this area, town and county names, as well as county boundaries. The most powerful feature that CONTOUR has, however, is a facility to plot out graduated data distributions. Data subjects might include height of land above sea level and population, or more commonly perhaps, levels of annual rainfall or temperature. Within each subject chosen, up to nine different intervals can be identified. On Plotmate, changes in interval are represented by an increasingly dense hatching pattern or by different colours. At every stage the Plotmate user can set his own parameters.

Output to Plotmate can be A5, A4, or A3 format, onto paper, card or OHT film.



Build up overlays of information

Since Plotmate has the facility to output onto OHT film, information can be plotted out as a series of overlays. Used in this way CONTOUR becomes a powerful teaching tool. Information can be built-up on an OHT projector, coastlines, towns and counties, county boundaries and data distributions. The same background overlays can service different data distribution subjects such as height above sea level or rainfall, so that relationships can be easily identified.

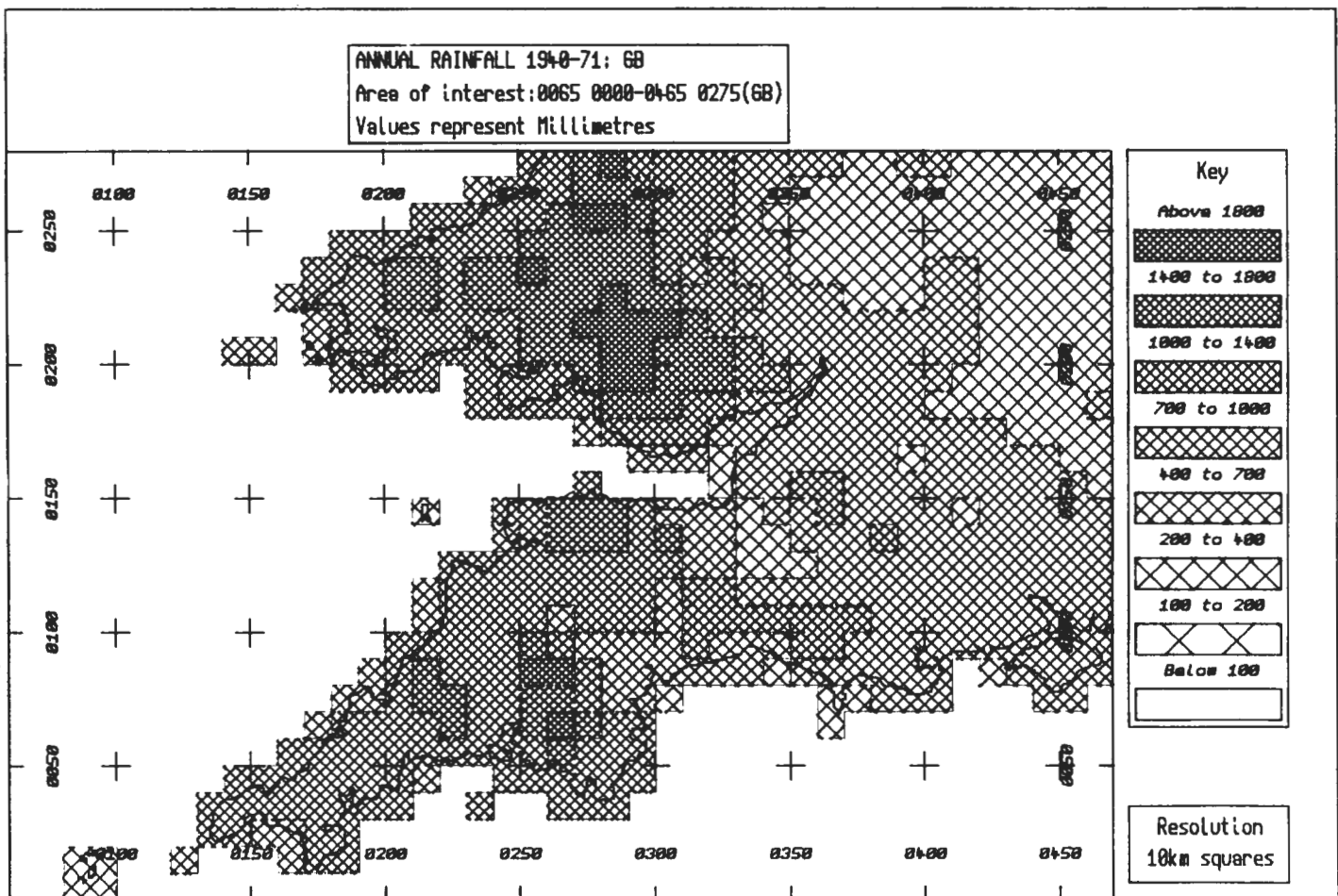
CONTOUR is a unique facility. It is supplied on an 80 track ADFS disk only, for use on twin double-sided disk drives, with a Plotmate A4SM/A3M plotter. CONTOUR costs £130 from Linear Graphics or from your local supplier of Linear Graphics' products. (Educational discounts are available.)

Increasing Domesday Utilization

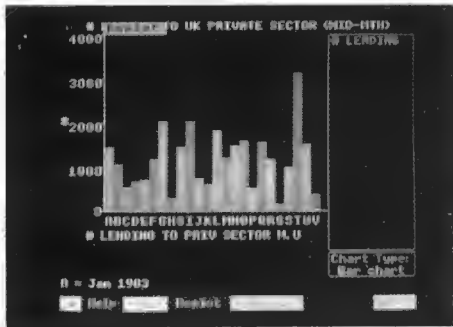
Those schools with access to Domesday at a remote location, such as a resource centre, can spool data from Domesday to their own disk, return to class and then use the data for their class use, with the PLOTMATE BBC WELCOME DISK or CONTOUR. Those schools with Domesday in-house can, of course, add Plotmate to their Domesday System to form a complete facility.

With Domesday tending to be available only at central points such as resource centres and libraries, Linear Graphics offers two cost effective ways to improve Domesday utilization.

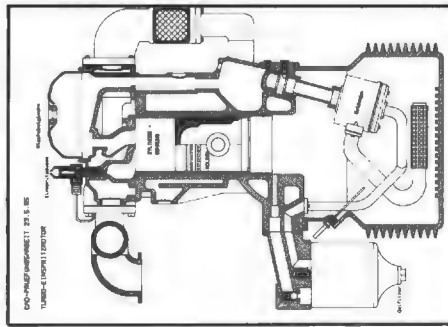
Nigel Young, Project Manager at Logica Communications and Electronics Systems Limited, part originators of the Domesday software, comments: "The output utility provided by Linear Graphics adds a new dimension to the educational potential of the Domesday System."



Every PLOTMATE picture tells a story



DOMESDAY
A typical bar chart from the Domesday database. Hard copy is obtainable via the Plotmate BBC Welcome disk.



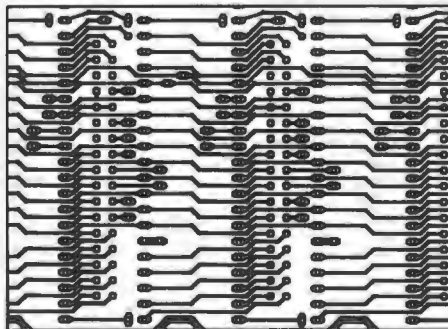
CAD
Example from SUPERDRAFT running on the NIMBUS.



DIGITISING
Map of Europe digitised and edited using LINMAP software.



IMAGE SCANNING
Linscan screen file of 'MONA LISA' incorporated into AMX PAGERMAKER.



PCB DESIGN
Using LINTRACK, a Printed Circuit Board design package.

ESS
20%-30%
DISCOUNTS

ESS
Linear Graphics' unique educational discount scheme.

PLOTMATE is one of the most popular graphics plotters used across the entire curriculum in education.

Sophisticated and inexpensive, Plotmate provides high definition plotted output and high resolution scanned input when used in conjunction with the LINSKAN Image Scanner.

MICRO COMPATIBILITY

Plotmate is compatible with all leading micros including the BBC, NIMBUS, IBM PCs and PC compatibles, such as the AMSTRAD PC1512.

CAD

Plotmate runs from many leading BBC packages including BITSTIK, AMX DESIGN, the REALTIME GRAPHICS SYSTEM and LOGOTRON LOGO. When the on-board graphics language range is extended, Plotmate 'M' models understand commands from HPGL 7475A/7470A industry standard languages enabling compatibility with a wide range of professional third party software including AUTOCAD, AUTOSKETCH, SUPERDRAFT, SCRIBE MODELLER and MICRODRAFT.

PCB DESIGN

LINTRACK is a sophisticated, low cost, CAD package which allows the creation and revision of printed circuit board artwork. BBC, Nimbus, IBM PC and Amstrad PC1512 versions available.

IMAGE SCANNING

The LINSKAN range of image scanners can create image files for most popular Desktop Publishing and Art packages.

AMX PAGERMAKER, FLEET STREET EDITOR, IMAGE, ARTROOM and ACE can process image files created by Linscan (for the BBC).

ALDUS PAGERMAKER and NEWSPAPER can use image files from Linscan (for the Nimbus).

GEM PAINT, XEROX VENTURA PUBLISHER, and GEM DESKTOP PUBLISHER can utilise image files created by Linscan (for IBM PCs and PC compatibles).

DOMESDAY

All Plotmate Welcome disks allow WRITE Files containing tabular data from the Domesday database to be reprocessed in pie, bar and line chart format on the BBC Master.

EDUCATIONAL DISCOUNTS

Linear Graphics offers the unique Educational Support Scheme (ESS) whereby savings of between 20%-30% on all Plotmate plotters, associated software and add-ons are available to all educational establishments. FREE training is offered with quantity orders.



PLOTMATE
LINEAR GRAPHICS LTD
28 Purdeys Way Rochford Essex SS4 1NE
Tel 0702 541663/4/5 Telex 995701

Please send me details on Linear Graphics' products. I am particularly interested in (please indicate)

NAME.....
POSITION.....
ESTABLISHMENT.....
ADDRESS.....
.....
.....
.....TEL.....