

# PIP

## Song Book

Supplied by:- Swallow Systems,  
32, High Street,  
High Wycombe,  
Buckinghamshire,  
HP11 2AQ  
Telephone 0494 813471



# PIP SONG-BOOK

## CONTENTS

Music with PIP . . . . .	page 2
Baa Baa Black Sheep . . . . .	page 4
Three Blind Mice . . . . .	page 5
Frere Jacques . . . . .	page 6
Au Clair de la Lune . . . . .	page 7
Polly Put the Kettle On . . . . .	page 7
Skye Boat Song . . . . .	page 8
Jingle Bells . . . . .	page 8
Bobby Shaftoe . . . . .	page 9
Clementine . . . . .	page 9
Yankee Doodle . . . . .	page 10
We Wish You A Merry Christmas . . . . .	page 10
Hickory, Dickory Dock . . . . .	page 11
Rule Britannia . . . . .	page 12


# MUSIC WITH PIP

**PIP** has a limited musical capability

You can play ten different **notes** with **PIP**, the same as the first **notes** people learn to play on the recorder.


The **notes** are:-






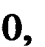
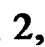
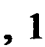
They are played by pressing  and then one of the number keys:-

0 1 2 3 4 5 6 7 8 9

C D E F F# G A B C D

To play several **notes** to make a tune, press  and a number for each **note**.

For example, to play the first line of “Three Blind Mice” you do this:-

CM, , 2, , 1, , 0, , 2, , 1, , 0, GO

All the **notes** are the same length and there are no **pauses** between them. Most tunes will sound better if some of the **notes** are made longer (perhaps two or three times as long) and some **pauses** are put between them.

**Notes** can be made longer by entering them several times or by putting them in a **RPT/END** loop. Each entry uses one program step, **RPT** and **END** take one step each, so up to 3 **notes** of the same value should be entered using **notes**, more than three should normally be entered using **RPT/END**.

**Pauses** can be made any length by using a simple value. **Pause 1** is about as long as a **note**, **pause 2** is about as long as two **notes** etc.

You may sometimes need to use a **note** that is one octave above or below the **note** you wanted to use. This gives the best possible result given the limited number of **notes** available.

You will find that the number of program steps limits the possible tunes. Do not expect to be able to play a complete symphony!

The examples in this book have been adapted somewhat freely from the original to give the best sound on **PIP**, you may be able to do better with some of them.

Rounds are particularly good for **PIP** as they often allow repeats of entire sequences of notes. If you have access to more than one **PIP** you could try using them to play different parts of a round.

# Baa Baa Black Sheep

Musical notation for the first line of the song. It consists of a four-measure staff with a treble clef. The notes are: G4, A4, B4, C5 (quarter notes); D5, E5, F5, G5 (quarter notes); A5, B5, C6 (quarter notes); D5, C5, B4, A4 (quarter notes). Below the staff are the corresponding fingerings: 0 0 0 0 5 5 5 5 6 7 8 6 5 5 5 5.

Musical notation for the second line of the song. It consists of a four-measure staff with a treble clef. The notes are: G4, A4, B4, C5 (quarter notes); D5, E5, F5, G5 (quarter notes); A5, B5, C6 (quarter notes); D5, C5, B4, A4 (quarter notes). Below the staff are the corresponding fingerings: 3 3 3 3 2 2 2 2 1 1 1 1 0 0 0 0.

# Three Blind Mice



**RPT 2 2 2 1 1 RPT 4 0 END END**



**RPT 2 5 5 3 3 RPT 4 2 END END**



**RPT 3 5 8 8 7 7 8 5 5 END**



**3 2 2 1 1 0 0 0**

# Frere Jacques



RPT 2    0 0 1 1 2 2 0 0    END



RPT 2    2 2 3 3 5 5 P2    END



RPT 2    5 6 5 3 2 2 0 0    END



RPT 2    0 0 5 5 0 0 P2    END



# Au Clair De La Lune



RPT 2 5 5 5 6 7 7 6 6 5 7 6 6 5 5 5 5 END

# Polly Put The Kettle On



5 6 5 3 2 0 0 0 1 2 1 8 7 5 5 5



5 6 5 3 2 0 0 2 1 1 2 1 RPT 4 0 END

# The Skye Boat Song



RPT 2 0 1 0 3 3 3 5 6 5 8 8 8



6 5 6 1 1 1 RPT 6 0 END END

# Jingle Bells



2 2 2 2 2 2 2 2 2 5 0 1 2 2 2 2



3 3 3 3 3 2 2 2 2 1 1 2 1 1 5 5

# Bobby Shaftoe



5 5 5 8 7 9 7 5 1 1 1 5 4 6 4 1



5 5 5 8 7 9 7 5 6 8 6 4 5 5 5 5

# Clementine



5 5 5 5 1 1 7 7 7 7 5 5 5 7 9 9

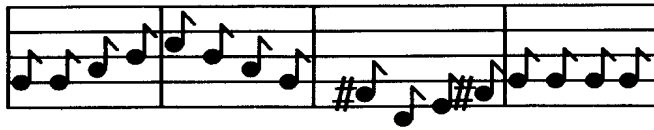


9 9 8 7 6 6 6 6

# Yankee Doodle



5 5 6 7 5 7 6 1 5 5 6 7 5 5 4 1

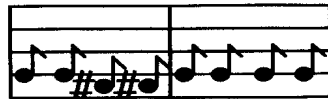


5 5 6 7 8 7 6 5 4 1 2 4 5 5 5 5

# We Wish You A Merry Christmas



1 1 5 5 5 6 5 4 2 2 0 0 2 2 1 1



5 5 4 4 5 5 5 5

# Hickory Dickory Dock



**RPT 2** 2 3 5 5 6 7 8 8 8 8 8 5 **END**



8 8 8 7 7 7 6 6 6 5 5 5



5 6 5 3 2 1 0 0 0 0 0 0

# Rule Britannia



7 7 P1 7 8 8 P1 7 8 7 6 5 4 4 P1 6



9 9 8 8 7 8 9 8 7 7 6 6 5 5 P2



